

210GS

[illegible]

ILLUSTRATED PARTS BREAKDOWN

210QS PEDESTAL SYSTEM

HOW TO USE THE IPB

GENERAL

This IPB is compiled following the organization and nomenclature of the engineering drawing structure.

MAJOR ASSEMBLY LOCATOR (When Applicable)

The Major Assembly Locator (first illustration) is an index that provides a description and a figure reference for all illustrations used in this manual.

INDENTED PARTS LIST

This manual identifies each assembly being broken down (figure reference callout), and all parts of that assembly. Further breakdown of an assembly is shown by an asterisk (*) preceding the item callouts in the Description Column. The number of asterisks preceding an item is used to denote the subordination of that item with respect to the Major Assembly. A single asterisk preceding an item description indicates that the item is part of the major assembly being illustrated. Items that are subordinate to single asterisks items, are denoted by two asterisks (**) and immediately follow the related single asterisk item. This system of part identification provides a means for the user to identify the next higher assembly item and make alternate selections for parts when the required replacement part of assembly is not immediately available.

COLUMN CALLOUT DESCRIPTION

Figure and Item - Indicates the figure number and item number of each part.

Description - Lists the name of the part and pertinent specifications (when required). Asterisks preceding the description denote the subordination of the part to the next higher assembly.

DEC Part No. - Lists the Digital part ordering number. A blank in this column indicates a Digital part number was not assigned at the time of publication.

ECO Cut-In - The notation at the top of this column indicates the ECO level of the system (option), at which the IPB was initially prepared. Subsequent ECO level designations, that modify existing parts or add new parts to the device, are inserted in the ECO Cut-In column next to the part that is added or modified.

Used On Code - Letters in this column correspond to the variation codes assigned in Figure 1. Parts with an Alpha notation(s) are used only in those option variations. A blank indicates that the part is used on all option variations.

Ref Fig No. - A cross reference between illustrations. For each Major Assembly, the number in this column denotes the figure of the next higher assembly. For all subassemblies, the number in this column denotes the figure showing additional detailed breakdown.

PART NUMBER/PART DESCRIPTION SORT SECTION

Parts are sorted both numerically and alphabetically by description, referenced to a location within the IPB, by figure number and item number.

REVISION HISTORY				OTHER IPB MANUALS REFERENCED
PRINTING	ECO LEVEL		DATE	
2nd Printing	210QS	00000-00001	28-MAR-91	EK-BA213-IP
	70-25775	00002-00007		
	70-24046	00002-00002		
	70-24037	00002-00004		
	70-24041	00000-00002		

Digital Equipment Corporation reserves the right, without notice, to make substitutions and modifications in the specifications of products documented in this manual and further reserves the right to withdraw any of these products from the market without notice.

Digital Equipment Corporation is not responsible for errors which may appear in the technical description (including illustrations and photographs) of the products covered by this manual.

None of the descriptions contained in this manual imply the granting of any license whatsoever to make, use or sell equipment constructed in accordance therewith.

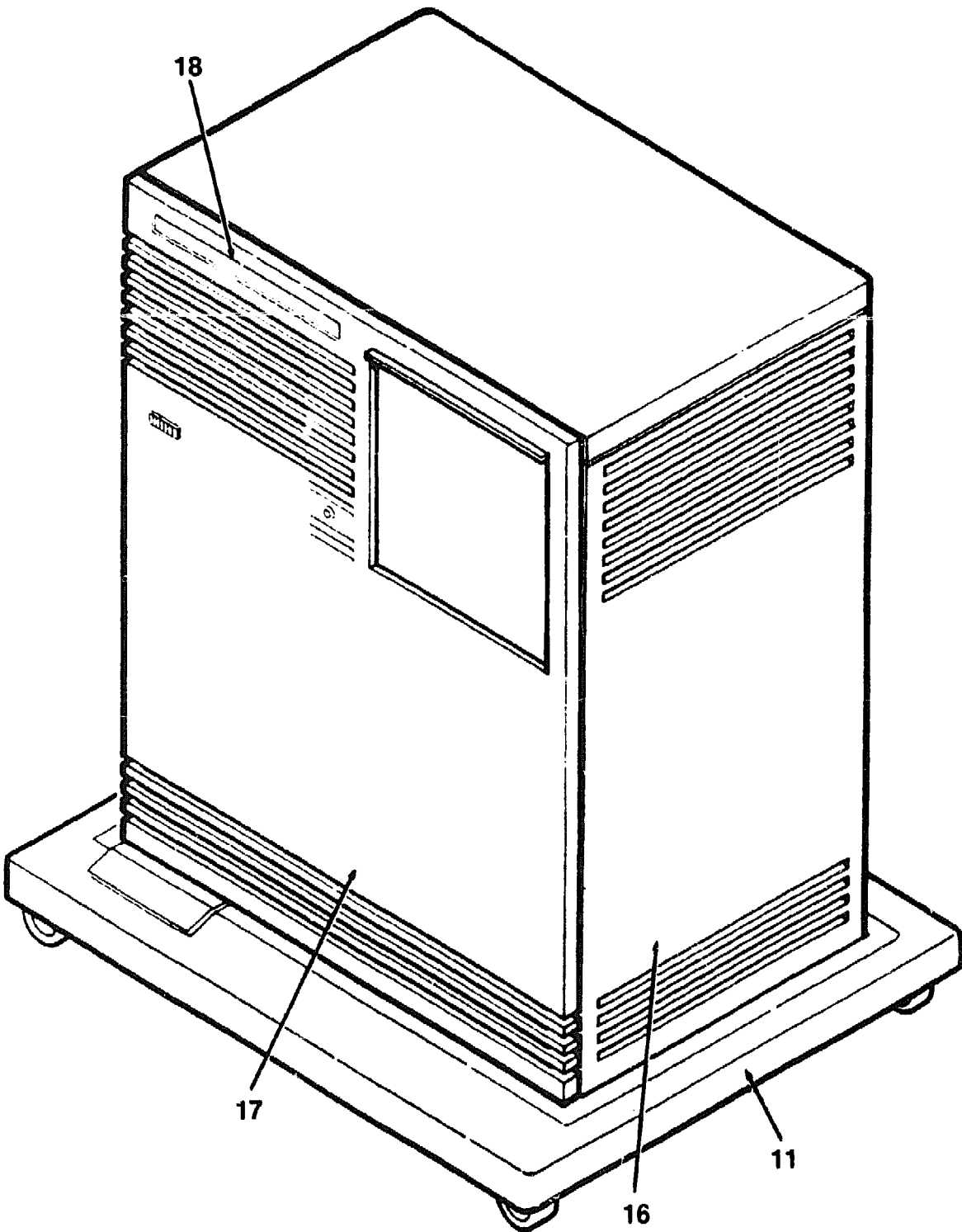
Copyright © 1989, 1991 by Digital Equipment Corporation. All rights reserved.

The postage-paid READER'S COMMENTS form on the last page of this document requests your critical evaluation to assist us in preparing future documentation.

Printed in U.S.A.

The following are trademarks of Digital Equipment Corporation :

BA213, DEC, DECdirect, DECsystem 5400, DECUS, PDP, UNIBUS, VAX, and the DIGITAL Logo.

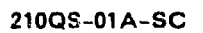


210QS-01-SC

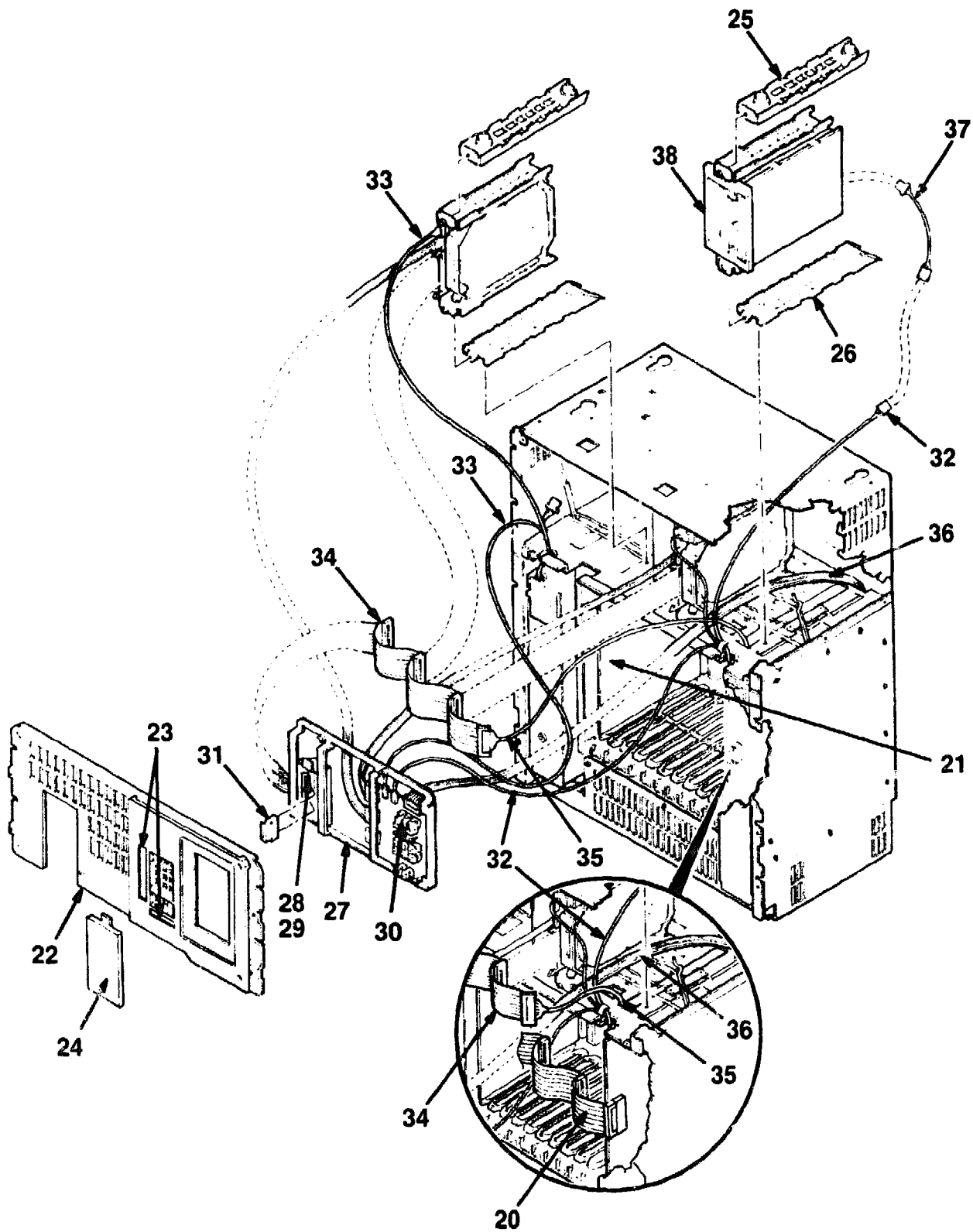
Figure 1. 210QS Pedestal System (Sheet 1 of 3)

PARTS LIST





PARTS LIST



210QS-01B-SC

Figure 1. 210QS Pedestal System (Sheet 3 of 3)

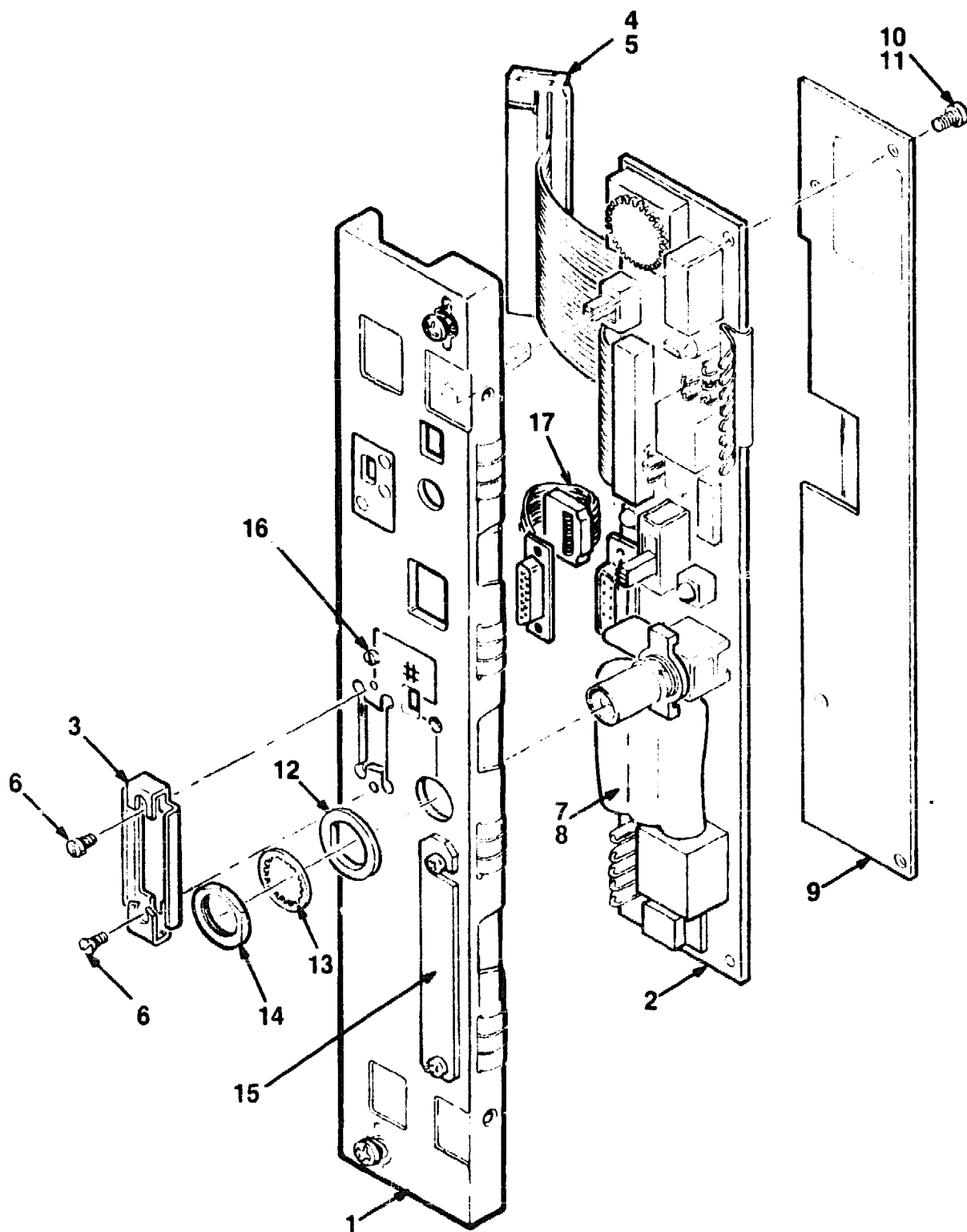
PARTS LIST

FIG. & ITEM NO.	DESCRIPTION	DEC PART NO.	ECO CUT-IN 210QS 00000	USED ON CODE	REF FIG NO.
1-	210QS PEDESTAL SYSTEM				
	Code A-Used on 210QS-A2 120V (w/o Skins) (TIMESHARE)	210QS-A2		A	
	Code B-Used on 640QS-A3 240V (w/o Skins) (TIMESHARE)	210QS-A3		B	
	Code C-Used on 210QS-B2 120V (w/Skins) (TIMESHARE)	210QS-B2		C	
	Code D-Used on 210QS-B3 240V (w/Skins) (TIMESHARE)	210QS-B3		D	
	Code E-Used on 210QS-C2 120V (w/o Skins, Rack Kit) (TIMESHARE)	210QS-C2		E	
	Code F-Used on 210QS-C3 240V (w/o Skins, Rack Kit) (TIMESHARE)	210QS-C3		F	
1	*BA213 UNIT ASSEMBLY 120V (2 P.S.) (See IPB Manual EK-BA213-IP)	70-24227-03		ACE	
	*BA213 UNIT ASSEMBLY 240V (2 P.S.) (See IPB Manual EK-BA213-IP)	70-24227-04		BDF	
2	*MODULE ASSEMBLY, H3602 BULKHEAD	70-25775-02			2
3	*Module, KN210 CPU	M7635-AA			
4	*Module, KN210 I/O	M7636-AA			
4A	*Cable Assembly, 50 Cond Flat	17-02418-01			
5	*Frame, Switch	74-35417-01		CD	
6	*Plug, Button	90-07064-00		ABE	
7	*Bulkhead Assembly, Front Dual	70-23982-02			
8	*Bulkhead Assembly, Front	70-23981-01			
9	*Panel Assembly, Gap Filler	70-24071-01			
10	*Cord, Power	17-00083-43		ACE	
11	*BASE ASSEMBLY	70-24046-01		CD	3
12	*Screw, Self Tap Phl Pan Hd No. 6 x 1/2	90-09800-08		CD	
13	*Washer, Flat	90-06661-00		CD	
14	*Screw, Sems Phl Pan Hd No. 10-32 x 15/16	90-09282-00		CD	3
15	*Fastener, Turn	74-33854-01		CD	3
16	*ENCLOSURE ASSEMBLY, SHELL	70-24037-01		CD	4
17	*PANEL ASSEMBLY, FRONT	70-24041-01		CD	5
18	*Nameplate DECsystem 5400	74-34425-40		CD	
19	*Module, 16 MB RAM Memory	M7622-AA			
20	*Cable, Flat Ribbon, 50 Cond, 3 Connector	17-01898-01			
	*Cable, Flat Ribbon, 50 Cond, 4 Connector	17-01898-02			
	*Cable, Flat Ribbon, 50 Cond, 5 Connector	17-01898-03			
21	*Module, Load	M9060-YA			

FIG. & ITEM NO.	DESCRIPTION	DEC PART NO.	B ECO CUT-IN 210QS 00000	USED ON CODE	REF FIG NO.
1- 22	*Panel Assembly, Front (DSSI)	70-25750-01			
23	*Label, "Control Panel"	36-29341-01			
24	*Filler, Tape Drive (See Note)	74-36425-01			
25	*Shock Assembly, Top	70-25452-03			
26	*Shock Assembly, Bottom	70-25452-04			
27	*OCP Assembly	70-25752-01			
28	*Plate Assembly, Connector	70-26206-01			
29	*Screw, Mach Flat Hd (Metric) 2.5 x .08	90-10917-01			
30	*Lens Encoder Set	12-28766-19			
31	*Connector, Terminator	12-29258-01			
32	*Harness Assembly, Right Power	17-01990-01			
33	*Harness Assembly, Left Power	17-01989-01			
34	*Cable Assembly, Flat Ribbon, 50-Pin Daisy Chain	17-01836-01			
35	*Cable Assembly, Round, 50 Conductor	17-02059-01			
36	*Cable Assembly, Flat Ribbon, 10 Conductor	17-01964-01			
37	*Cable Assembly, TK Power 5-Pin to 4-Pin (Connects to Tape Drive)	17-01937-01			
38	*Drive, TKXX Tape (Not Part of This Assembly, Shown for Reference Only.)	TKXX-XX			
NOTE: Items 24, 25 and 26 to be installed when no Tape Drive is used.					
FIELD REPLACEABLE UNITS (Not Shown) (These Parts are listed for reference only. See IPB Manual EK-BA213-IP.)					
	*Backplane Assembly	70-23712-01			
	*Fan Assembly	12-23609-04			
	*Filter Assembly, AC Input	70-23769-01			
	*Power Supply Assembly (100/120V)	H7868-A		ACE	
	*Power Supply Assembly (220/240V)	H7868-B		BDF	
	*Switch Assembly, AC	70-23999-01			
	*Harness Assembly, Power Supply	70-23366-01			
	*Cable Assembly (To TK drive)	17-01363-01			
	*Bracket, TKXX Bottom Shock (deleted)	70-23997-01	BA213		
	*Bracket, TKXX Top Shock (deleted)	70-23997-02	00004		

FIG. & ITEM NO.	DESCRIPTION	DEC PART NO.	ECO CUT-IN 210QS 00000	USED ON CODE	REF FIG NO.
1-	KITS (Not Shown)				
	*KIT, RACK MOUNT KIT BA213 LARGE S-BOX	BA213-RA		EF	
	**Guide, Rack Mount Installation	EK-BA200-IN			
	**Hardware, Rack Mount	70-24263-02			
	***Support, Mounting	74-34638-01			
	***Screw, Sems Phl Pan Hd No. 10-32 x 1/2	90-09700-00			
	***U-Nut, Retainer	90-07786-00			
	*KIT, ACCESSORY	70-25760-01		AE	
	**Cable Assembly, 06 Conductor	17-00811-03			
	**Screwdriver, Flat Blade	47-00042-00			
	**Label, "S-Box, Module Utilization"	36-27923-01			
	**Label, "S-Box, Module Utilization"	36-27923-02			
	**Label, "BA2XX Rev"	36-29164-07			
	**Tee, BNC Coaxial	12-25869-01			
	**Connector, BNC Coaxial	12-26318-01			
	**Connector, 25-Position to 6-Position Adapter	12-23599-01			
	*KIT, ACCESSORY	70-25760-02		C	
	**Cable Assembly, 06 Conductor	17-00811-03			
	**Key, Plastic	12-17119-01			
	**Screwdriver, Flat Blade	47-00042-00			
	**Label, "S-Box, Module Utilization"	36-27923-01			
	**Label, "S-Box, Module Utilization"	36-27923-02			
	**Label, "BA2XX Rev"	36-29164-07			
	**Tee, BNC Coaxial	12-25869-01			
	**Connector, BNC Coaxial	12-26318-01			
	**Connector, 25-Position to 6-Position Adapter	12-23599-01			
	*KIT, ACCESSORY	70-25760-03		BF	
	**Cable Assembly, 06 Conductor	17-01364-02			
	**Screwdriver, Flat Blade	47-00042-00			
	**Label, "S-Box, Module Utilization"	36-27923-01			
	**Label, "S-Box, Module Utilization"	36-27923-02			
	**Label, "BA2XX Rev"	36-29164-07			
	**Tee, BNC Coaxial	12-25369-01			
	**Connector, BNC Coaxial	12-26318-01			
	**Connector, 25-Position to 6-Position Adapter	12-23599-01			

FIG. & ITEM NO.	DESCRIPTION	B DEC PART NO.	ECC CUT-IN 210QS 00000	USED ON CODE	REF FIG NO.
1-	<p>*KIT, ACCESSORY</p> <p>**Cable Assembly, 06 Conductor</p> <p>**Key, Plastic</p> <p>**Screwdriver, Flat Blade</p> <p>**Label, "S-Box, Module Utilization"</p> <p>**Label, "S-Box, Module Utilization"</p> <p>**Label, "BA2XX Rev"</p> <p>**Tee, BNC Coaxial</p> <p>**Connector, BNC Coaxial</p> <p>**Connector, 25 -Position to 6-Position Adapter</p> <p>*KIT, Q-BUS GRANT CONTINUITY</p> <p>**Card, Q-Bus Grant Continuity</p> <p>**Panel, Blank Dual</p> <p>**Kit, Bulkhead Panel</p> <p>**Kit, Bulkhead Panel</p> <p>**Label, "Module Numbers"</p> <p>LABELS (Not Shown)</p> <p>*Label, "Module Number, M7622-AA"</p> <p>*Label, "Module Number, M9060-YA"</p> <p>*Label, "Module Number, M7635-AA"</p> <p>*Label, "Module Number, M7636-AA"</p> <p>*Label, "Caution S-Box Shipping"</p> <p>*Label, "BA2XX Rev"</p> <p>*Label, "Logo/Model DE/system 5400"</p> <p>*Label, "Postcard FTZ"</p> <p>*Label, "Warning Equipment Rating 100-120V"</p> <p>*Label, "Warning Equipment Rating 220-220V"</p> <p>*Label, "Serial/Model, Made in USA, 100V"</p> <p>*Label, "Serial/Model Made in UK, 100V"</p> <p>*Label, "Serial/Model Made in USA, 220V"</p> <p>*Label, "Serial/Model Made in UK, 220V"</p> <p>*Label, "Pedestal, USA, 100V"</p> <p>*Label, "Pedestal, USA, 220V"</p> <p>*Label, "Pedestal, UK, 220V"</p> <p>*Label, "Pedestal, UK, 100V"</p> <p>*Label, "Telecom Approval" (Japan) (added)</p>	<p>70-25760-04</p> <p>17-01364-02</p> <p>12-17119-01</p> <p>47-00042-00</p> <p>36-27923-01</p> <p>36-27923-02</p> <p>36-29164-07</p> <p>12-25869-01</p> <p>12-26311-01</p> <p>12-23599-01</p> <p>M9047-SA</p> <p>M9047-00</p> <p>74-33507-01</p> <p>74-24505-01</p> <p>74-24505-02</p> <p>36-26883-18</p> <p>36-26883-43</p> <p>36-26883-17</p> <p>36-26883-91</p> <p>36-26883-92</p> <p>36-27924-01</p> <p>36-29163-07</p> <p>36-27354-33</p> <p>36-30422-04</p> <p>36-17905-16</p> <p>36-17905-17</p> <p>36-27329-01</p> <p>36-27329-02</p> <p>36-27329-03</p> <p>36-27329-04</p> <p>36-27838-01</p> <p>36-27838-02</p> <p>36-27838-03</p> <p>36-27838-04</p> <p>36-33180-10</p>	00001	<p>D</p> <p>ABEF</p> <p>BDF</p> <p>ACE</p> <p>BDF</p> <p>ACE</p> <p>ACE</p> <p>BDF</p> <p>BDF</p> <p>C</p> <p>D</p> <p>D</p> <p>C</p> <p>ACE</p>	



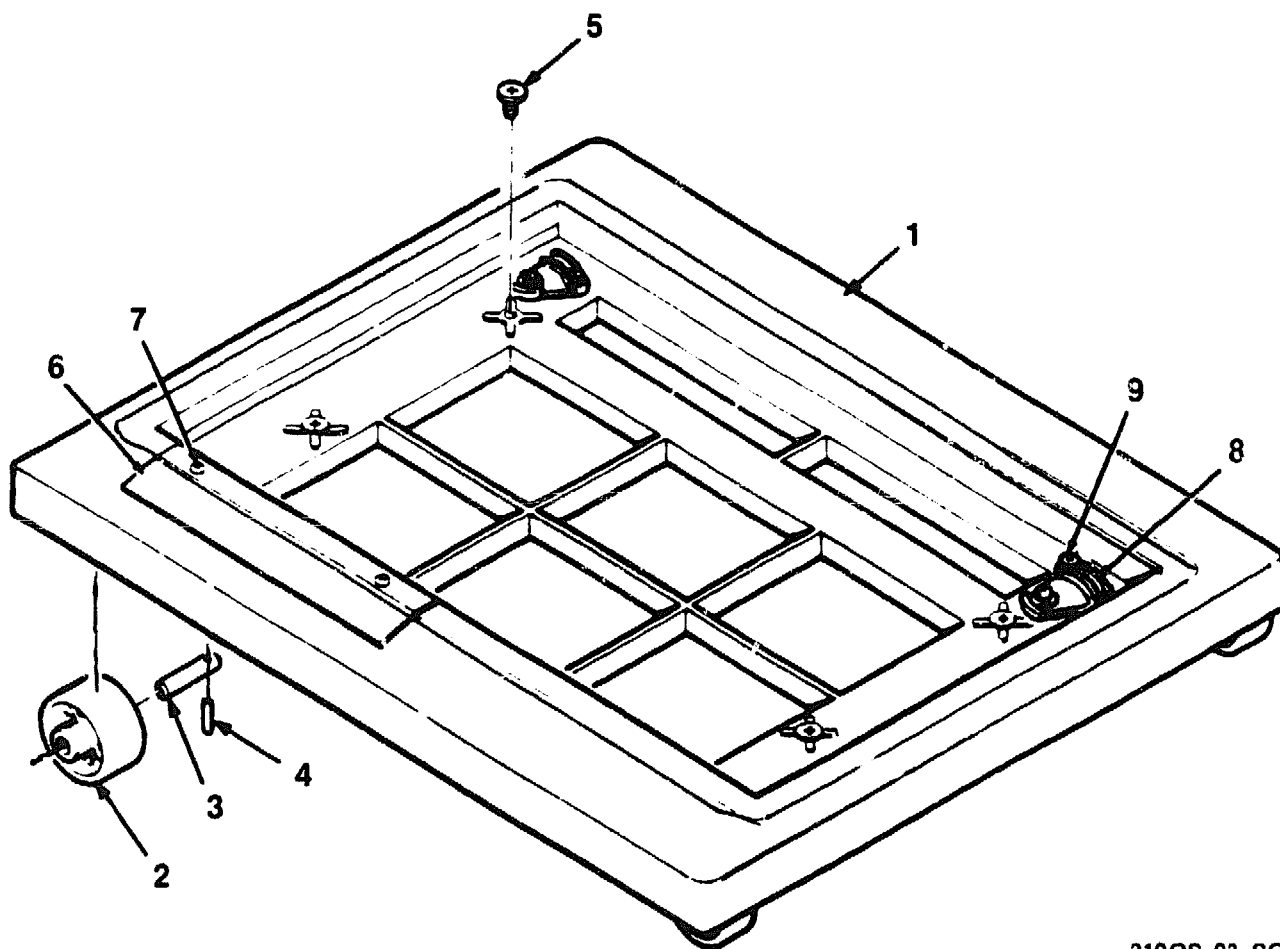
210QS-02-SC

Figure 2. Module Assembly, H3602 Bulkhead

PARTS LIST

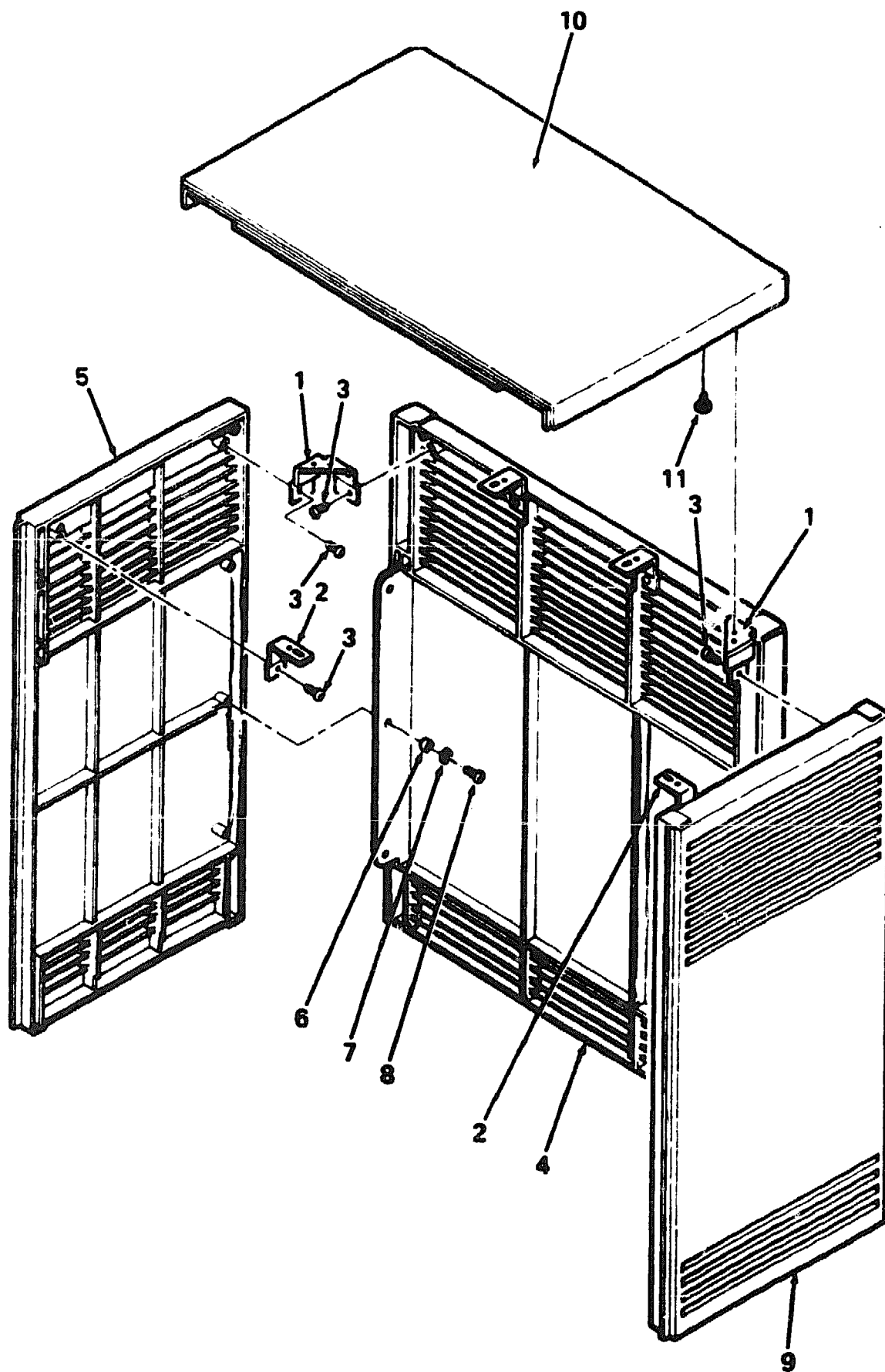
FIG. & ITEM NO.	DESCRIPTION	H DEC PART NO.	ECO CUT-IN 70-25775 00002	USED ON CODE	REF FIG NO.
2-	MODULE ASSEMBLY, H3602 BULKHEAD	70-25775-02			1
1	*Bulkhead Assembly, Front Dual (Replaces 70-23982-09)	70-23982-14	00004		
2	*Module, SLU Console (Replaces 54-17381-01)	54-17381-03	00004		
3	*Latch Assembly, 15 Pin, Slide w/o Hardware	12-18489-03			
4	*Cable Assembly, 40 Cond Flat	17-02430-01			
5	*Tape, Foam (deleted)	90-08228-00	00006		
6	*Latch Assembly, 2 Piece Slide w/Hardware (added)	12-18489-04	00006		
7	*Battery, 3 Cell, 3.75V	12-19245-01			
8	*Tape, Velcro	12-26595-02			
9	*Insulator, Shield (Replaces 74-37167-01)	74-37167-02	00004		
10	*Washer, Internal Tooth Lock No. 10 (deleted)	90-06635-00	00006		
11	*Screw, Truss Hd No. 6-32 x 5/16 (replaces 90-08404-02)	90-00063-78	00006		
12	*Bushing, Mylar (deleted)	12-20575-01	00007		
13	*Washer, BNC Internal Tooth Lock	90-00037-05			
14	*Nut, Hex No. 1/2-28	90-10563-01			
15	*Carrier, Label (deleted)	74-34429-01	00006		
16	*Screw, Thd Rt No. 4-40 x 5/16	90-00063-02			
17	*Cable Assembly, 50 Cond Flat Ribbon (deleted)	17-02130-01	00007		
	Labels (Not Shown)				
	*Label, "Baud Select"	36-26584-01			
	*Label, "Debet Ethernet Address" (deleted)	36-25542-02	00006		
	*Label, "Direct Thermal" (deleted)	36-28231-08	00006		

FIG. & ITEM NO.	DESCRIPTION	DEC PART NO.	ECO CUT-IN 70-24046 00001	USED ON CODE	REF FIG NO.
3-	BASE ASSEMBLY	70-24046-01		CD	1
1	*Base, Lower	74-33650-01			
2	*Wheel, Base	74-34068-01			
3	*Shaft, Wheel	74-34069-01			
4	*Pin, Roll	90-09385-00			
5	*Screw, Shoulder, Thread Rolling	12-26868-01			
6	*Support, Label	74-34846-01			
7	*Screw, Self Tap Phl Pan Hd No. 6-19 x 3/4	90-09800-06			
8	*Fastener, Turn (See Note)	74-33854-01			
9	*Screw, Sems Phl Pan Hd No. 10-32 x 5/16 (See Note)	90-09282-00			
Note: Item part of figure 1. Shown here for clarity.					



210QS-03-SC

Figure 3. Base Assembly



210QS-04-SC

Figure 4. Enclosure Assembly, Shell

PARTS LIST



FIG. & ITEM NO.	DESCRIPTION	DEC PART NO.	E ECO CUT-IN 70-24037 00001	USED ON CODE	REF FIG NO.
4-	ENCLOSURE ASSEMBLY, SHELL	70-24037-01		CD	1
1	*Bracket, Corner	74-34126-01			
2	*Bracket, Side	74-34125-01			
3	*Screw, Self Tap Phi Pan Hd No. 8-16 x 3/8	90-09800-04			
4	*Panel, Rear	74-33651-01			
5	*Panel, Left Side	74-33694-01			
6	*Sleeve	74-34424-01			
7	*Washer, Flat	90-06661-00			
8	*Screw, Self Tap Phi Hd No. 8-16 x 1/2	90-09800-08			
9	*Panel, Right Side	74-33647-01			
10	*Cover, Top	74-33646-01			
11	*Screw, Thread Rolling Shoulder	12-26868-01			

PART NUMBER/DESCRIPTION INDEX



INDEX BY DEC PART NUMBER
210QS PEDESTAL SYSTEM

PART NO.	DESCRIPTION	FIG NO.	ITEM NO.
12-17119-01	Key, Plastic	1	Not Shown
12-18489-03	Latch Assembly, 15 Pin, Slide w/o Hardware	2	3
12-18489-04	Latch Assembly, 2 Piece Slide w/Hardware (added)	2	6
12-19245-01	Battery, 3 Cell, 3.75V	2	7
12-20575-01	Bushing, Mylar (deleted)	2	12
12-23599-01	Connector, 25-Position to 6-Position Adapter	1	Not Shown
12-23599-01	Connector, 25-Position to 6-Position Adapter	1	Not Shown
12-23609-04	Fan Assembly	1	Not Shown
12-25869-01	Tee, BNC Coaxial	1	Not Shown
12-25869-01	Tee, BNC Coaxial	1	Not Shown
12-26318-01	Connector, BNC Coaxial	1	Not Shown
12-26318-01	Connector, BNC Coaxial	1	Not Shown
12-26595-02	Tape, Velcro	2	8-
12-26868-01	Screw, Thread Rolling Shoulder	4	11
12-26868-01	Screw, Shoulder, Thread Rolling	3	5
12-28766-19	Lens Encoder Set	1	30
12-29258-01	Connector, Terminator	1	31
17-00083-43	Cord, Power	1	10
17-00811-03	Cable Assembly, 06 Conductor	1	Not Shown
17-00811-03	Cable Assembly, 06 Conductor	1	Not Shown
17-01363-01	Cable Assembly (To TK drive)	1	Not Shown
17-01364-02	Cable Assembly, 06 Conductor	1	Not Shown
17-01364-02	Cable Assembly, 06 Conductor	1	Not Shown
17-01836-01	Cable Assembly, Flat Ribbon, 50-Pin Daisy Chain	1	34
17-01898-01	Cable, Flat Ribbon, 50 Cond, 3 Connector	1	20
17-01898-02	Cable, Flat Ribbon, 50 Cond, 4 Connector	1	20
17-01898-03	Cable, Flat Ribbon, 50 Cond, 5 Connector	1	20
17-01937-01	Cable Assembly, TK Power 5-Pin to 4-Pin (Connects to Tape Drive)	1	37
17-01964-01	Cable Assembly, Flat Ribbon, 10 Conductor	1	36
17-01989-01	Harness Assembly, Left Power	1	33
17-01990-01	Harness Assembly, Right Power	1	32
17-02059-01	Cable Assembly, Round, 50 Conductor	1	35
17-02130-01	Cable Assembly, 50 Cond Flat Ribbon (deleted)	2	17
17-02418-01	Cable Assembly, 50 Cond Flat	1	4A
17-02430-01	Cable Assembly, 40 Cond Flat	2	4
36-17905-16	Label, "Warning Equipment Rating 100-120V"	1	Not Shown
36-17905-17	Label, "Warning Equipment Rating 220-220V"	1	Not Shown
36-25542-02	Label, "Debet Ethernet Address" (deleted)	2	Not Shown
36-26584-01	Label, "Baud Select"	2	Not Shown
36-26883-17	Label, "Module Number, M9060-YA"	1	Not Shown
36-26883-18	Label, "Module Numbers"	1	Not Shown
36-26883-43	Label, "Module Number, M7622-AA"	1	Not Shown
36-26883-91	Label, "Module Number, M7635-AA"	1	Not Shown
36-26883-92	Label, "Module Number, M7636-AA"	1	Not Shown
36-27329-01	Label, "Serial/Model, Made in USA, 100V"	1	Not Shown
36-27329-02	Label, "Serial/Model Made in UK, 100V"	1	Not Shown
36-27329-03	Label, "Serial/Model Made in USA, 220V"	1	Not Shown
36-27329-04	Label, "Serial/Model Made in UK, 220V"	1	Not Shown
36-27354-33	Label, "Logo/Model DECsystem 5400"	1	Not Shown

INDEX BY DEC PART NUMBER
210QS PEDESTAL SYSTEM

PART NO.	DESCRIPTION	FIG NO.	ITEM NO.
36-27838-01	Label, "Pedestal, USA, 100V"	1	Not Shown
36-27838-02	Label, "Pedestal, USA, 220V"	1	Not Shown
36-27838-03	Label, "Pedestal, UK, 220V"	1	Not Shown
36-27838-04	Label, "Pedestal, UK, 100V"	1	Not Shown
36-27923-01	Label, "S-Box, Module Utilization"	1	Not Shown
36-27923-01	Label, "S-Box, Module Utilization"	1	Not Shown
36-27923-02	Label, "S-Box, Module Utilization"	1	Not Shown
36-27923-02	Label, "S-Box, Module Utilization"	1	Not Shown
36-27924-01	Label, "Caution S-Box Shipping"	1	Not Shown
36-28231-08	Label, "Direct Thermal" (deleted)	2	Not Shown
36-29163-07	Label, "BA2XX Rev"	1	Not Shown
36-29164-07	Label, "BA2XX Rev"	1	Not Shown
36-29164-07	Label, "BA2XX Rev"	1	Not Shown
36-29341-01	Label, "Control Panel"	1	3
36-30422-04	Label, "Postcard FTZ"	1	Not Shown
36-33180-10	Label, "Telecom Approval" (Japan) (added)	1	Not Shown
47-00042-00	Screwdriver, Flat Blade	1	Not Shown
47-00042-00	Screwdriver, Flat Blade	1	Not Shown
54-17381-03	Module, SLU Console (Replaces 54-17381-01)	2	2
70-23366-01	Harness Assembly, Power Supply	1	Not Shown
70-23712-01	Backplane Assembly	1	Not Shown
70-23769-01	Filter Assembly, AC Input	1	Not Shown
70-23981-01	Bulkhead Assembly, Front	1	8
70-23982-02	Bulkhead Assembly, Front Dual	1	7
70-23982-14	Bulkhead Assembly, Front Dual 2 (Replaces 70-23982-09)	1	
70-23997-01	Bracket, TKXX Bottom Shock (deleted)	1	Not Shown
70-23997-02	Bracket, TKXX Top Shock (deleted)	1	Not Shown
70-23999-01	Switch Assembly, AC	1	Not Shown
70-24037-01	ENCLOSURE ASSEMBLY, SHELL	1	16
70-24037-01	ENCLOSURE ASSEMBLY, SHELL	4	N/A
70-24041-01	PANEL ASSEMBLY, FRONT	1	17
70-24041-01	PANEL ASSEMBLY, FRONT	5	N/A
70-24046-01	BASE ASSEMBLY	3	N/A
70-24046-01	BASE ASSEMBLY	1	11
70-24071-01	Panel Assembly, Gap Filler	1	9
70-24227-03	BA213 UNIT ASSEMBLY 120V (2 P.S.)	1	1
70-24227-04	BA213 UNIT ASSEMBLY 240V (2 P.S.)	1	1
70-24263-02	Hardware, Rack Mount	1	Not Shown
70-25452-03	Shock Assembly, Top	1	25
70-25452-04	Shock Assembly, Bottom	1	26
70-25750-01	Panel Assembly, Front (DSSI)	1	22
70-25752-01	OCP Assembly	1	27
70-25760-01	KIT, ACCESSORY	1	Not Shown
70-25760-02	KIT, ACCESSORY	1	Not Shown
70-25760-03	KIT, ACCESSORY	1	Not Shown
70-25760-04	KIT, ACCESSORY	1	Not Shown
70-25775-02	MODULE ASSEMBLY, H3602 BULKHEAD	1	2
70-25775-02	MODULE ASSEMBLY, H3602 BULKHEAD	2	N/A
70-26206-01	Plate Assembly, Connector	1	28
74-24505-01	Kit, Bulkhead Panel	1	Not Shown
74-24505-02	Kit, Bulkhead Panel	1	Not Shown

**INDEX BY DEC PART NUMBER
210QS PEDESTAL SYSTEM**

PART NO.	DESCRIPTION	FIG NO.	ITEM NO.
74-33507-01	Panel, Blank Dual	1	Not Shown
74-33646-01	Cover, Top	4	10
74-33647-01	Panel, Right Side	4	9
74-33648-01	Panel, Front	5	1
74-33650-01	Base, Lower	3	1
74-33651-01	Panel, Rear	4	4
74-33694-01	Panel, Left Side	4	5
74-33854-01	Fastener, Turn	1	15
74-33854-01	Fastener, Turn	3	8
74-34061-01	Door	5	3
74-34062-01	Channel (Front Panel)	5	4
74-34063-01	Tumbler	5	11
74-34064-01	Latch, Pull	5	8
74-34065-01	Latch, Slide	5	9
74-34066-01	Spring, Channel	5	5
74-34067-01	Bezel, Switch	5	2
74-34068-01	Wheel, Base	3	2
74-34069-01	Shaft, Wheel	3	3
74-34123-01	Bracket, Top Right Hand	5	12
74-34123-02	Bracket, Top Left Hand	5	13
74-34124-01	Bracket, Bottom Right Hand	5	14
74-34124-02	Bracket, Bottom Left Hand	5	15
74-34125-01	Bracket, Side	4	2
74-34126-01	Bracket, Corner	4	1
74-34363-01	Stop, Door Position	5	6
74-34424-01	Sleeve	4	6
74-34425-40	Nameplate DECsystem 5400	1	18
74-34426-01	Logo	5	17
74-34429-01	Carrier, Label (deleted)	2	15
74-34638-01	Support, Mounting	1	Not Shown
74-34846-01	Support, Label	3	6
74-35417-01	Frame, Switch	1	5
74-36425-01	Filler, Tape Drive (See Note)	1	24
74-37167-02	Insulator, Shield (Replaces 74-37167-01)	2	9
90-00037-05	Washer, BNC Internal Tooth Lock	2	13
90-00063-02	Screw, Thd RI No. 4-40 x 5/16	2	16
90-00063-78	Screw, Truss Hd No. 6-32 x 5/16 (Replaces 90-08404-02)	2	11
90-06635-00	Washer, Internal Tooth Lock No. 10	2	10
90-06661-00	Washer, Flat	1	13
90-06661-00	Washer, Flat	4	7
90-07064-00	Plug, Button	1	6
90-07786-00	U-Nut, Retainer	1	Not Shown
90-08228-00	Tape, Foam (deleted)	2	5
90-09257-05	Ring, Retainer	5	10
90-09282-00	Screw, Sems Phi Pan Hd No. 10-32 x 5/16	3	9
90-09282-00	Screw, Sems Phi Pan Hd No. 10-32 x 15/16	1	14
90-09385-00	Pin, Roll	3	4
90-09700-00	Screw, Sems Phi Pan Hd No. 10-32 x 1/2	1	Not Shown
90-09800-04	Screw, Self Tap Phi Pan Hd No. 8-16 x 3/8	4	3
90-09800-04	Screw, Self Tap Phi Pan Hd No. 8-16 x 3/8	5	16
90-09800-06	Screw, Self Tap Phi Pan Hd No. 6-19 x 3/4	3	7
90-09800-06	Screw, Phi Pan Hd No. 6-19 x 3/8	5	7

**INDEX BY DEC PART NUMBER
210QS PEDESTAL SYSTEM**

PART NO.	DESCRIPTION	FIG NO.	ITEM NO.
90-09800-08	Screw, Self Tap Phi Pan Hd No. 6 x 1/2	1	12
90-09800-08	Screw, Self Tap Phi Hd No. 8-16 x 1/2	4	8
90-10563-01	Nut, Hex No. 1/2-28	2	14
90-10917-01	Screw, Mach Flat Hd (Metric) 2.5 x .08	1	29
210QS-A2	210QS-A2 120V (w/o Skins) (TIMESHARE)	1	N/A
210QS-A3	210QS-A3 240V (w/o Skins) (TIMESHARE)	1	N/A
210QS-B2	210QS-B2 120V (w/Skins) (TIMESHARE)	1	N/A
210QS-B3	210QS-B3 240V (w/Skins) (TIMESHARE)	1	N/A
210QS-C2	210QS-C2 120V (w/o Skins, Rack Kit) (TIMESHARE)	1	N/A
210QS-C3	210QS-C3 240V (w/ \ Skins, Rack Kit) (TIMESHARE)	1	N/A
BA213-RA	KIT, RACK MOUNT KIT BA213 LARGE S-BOX	1	Not Shown
EK-BA200-IN	Guide, Rack Mount Installation	1	Not Shown
H7868-A	Power Supply Assembly (100/120V)	1	Not Shown
H7868-B	Power Supply Assembly (220/240V)	1	Not Shown
M7622-AA	Module, 16 MB RAM Memory	1	19
M7635-AA	Module, KN210 CPU	1	3
M7636-AA	Module, KN210 I/O	1	4
M9047-00	Card, Q-Bus Grant Continuity	1	Not Shown
M9047-SA	Kit, Q-Bus Grant CONTINUITY	1	Not Shown
M9060-YA	Module, Load	1	21
N/A	210QS PEDESTAL SYSTEM	1	N/A
TKXX-XX	Drive, TKXX Tape	1	38

**INDEX BY DEC PART DESCRIPTION
210QS PEDASTAL SYSTEM**

DESCRIPTION	DEC PART NO.	FIG. NO.	ITEM NO.
210QS PEDESTAL SYSTEM	N/A	1	N/A
210QS-A2 120V (w/o Skins) (TIMESHARE)	210QS-A2	1	N/A
210QS-A3 240V (w/o Skins) (TIMESHARE)	210QS-A3	1	N/A
210QS-B2 120V(w/Skins) (TIMESHARE)	210QS-B2	1	N/A
210QS-B3 240V (w/Skins) (TIMESHARE)	210QS-B3	1	N/A
210QS-C2 120V (w/o Skins, Rack Kit) (TIMESHARE)	210QS-C2	1	N/A
210QS-C3 240V (w/o Skins, Rack Kit) (TIMESHARE)	210QS-C3	1	N/A
 BA213 UNIT ASSEMBLY 120V (2 P.S.)	70-24227-03	1	1
BA213 UNIT ASSEMBLY 240V (2 P.S.)	70-24227-04	1	1
Backplane Assembly	70-23712-01	1	Not Shown
BASE ASSEMBLY	70-24046-01	3	N/A
BASE ASSEMBLY	70-24046-01	1	11
Base, Lower	74-33650-01	3	1
Battery, 3 Cell, 3.75V	12-19245-01	2	7
Bezel, Switch	74-34067-01	5	2
Bracket, Bottom Left Hand	74-34124-02	5	15
Bracket, Bottom Right Hand	74-34124-01	5	14
 Bracket, Corner	74-34126-01	4	1
Bracket, Side	74-34125-01	4	2
Bracket, TKXX Bottom Shock (deleted)	70-23997-01	1	Not Shown
Bracket, TKXX Top Shock (deleted)	70-23997-02	1	Not Shown
Bracket, Top Left Hand	74-34123-02	5	13
Bracket, Top Right Hand	74-34123-01	5	12
Bulkhead Assembly, Front	70-23981-01	1	8
Bulkhead Assembly, Front Dual	70-23982-02	1	7
Bulkhead Assembly, Front Dual (Replaces 70-23982-09)	70-23982-14	2	1
Bushing, Mylar (deleted)	12-20575-01	2	12
 Cable Assembly (To TK drive)	17-01363-01	1	Not Shown
Cable Assembly, 06 Conductor	17-00811-03	1	Not Shown
Cable Assembly, 06 Conductor	17-01364-02	1	Not Shown
Cable Assembly, 06 Conductor	17-00811-03	1	Not Shown
Cable Assembly, 06 Conductor	17-01364-02	1	Not Shown
Cable Assembly, 40 Cond Flat	17-02430-01	2	4
Cable Assembly, 50 Cond Flat	17-02418-01	1	4A
Cable Assembly, 50 Cond Flat Ribbon (deleted)	17-02130-01	2	17
Cable Assembly, Flat Ribbon, 10 Conductor	17-01964-01	1	36
Cable Assembly, Flat Ribbon, 50-Pin Daisy Chain	17-01836-01	1	34
Cable Assembly, Round, 50 Conductor	17-02059-01	1	35
Cable Assembly, TK Power 5-Pin to 4-Pin (Connects to Tape Drive)	17-01937-01	1	37
 Cable, Flat Ribbon, 50 Cond, 3 Connector	17-01898-01	1	20
Cable, Flat Ribbon, 50 Cond, 4 Connector	17-01898-02	1	20
Cable, Flat Ribbon, 50 Cond, 5 Connector	17-01898-03	1	20
Card, Q-Bus Grant Continuity	M9047-00	1	Not Shown
Carrier, Label (deleted)	74-34429-01	2	15
Channel (Front Panel)	74-34062-01	5	4
Connector, 25-Position to 6-Position Adapter	12-23599-01	1	Not Shown
Connector, 25-Position to 6-Position Adapter	12-23599-01	1	Not Shown
Connector, BNC Coaxial	12-26318-01	1	Not Shown
Connector, BNC Coaxial	12-26318-01	1	Not Shown
Connector, Terminator	12-29258-01	1	31
Cord, Power	17-00083-43	1	10
Cover, Top	74-33646-01	4	10

**INDEX BY DEC PART DESCRIPTION
210QS PEDESTAL SYSTEM**

DESCRIPTION	DEC PART NO.	FIG. NO.	ITEM NO.
Door	74-34 '61-01	5	3
Drive, TKXX Tape	TKXX-XX	1	38
ENCLOSURE ASSEMBLY, SHELL	70-24037-01	1	16
ENCLOSURE ASSEMBLY, SHELL	70-24037-01	4	N/A
Fan Assembly	12-23609-04	1	Not Shown
Fastener, Turn	74-33854-01	1	15
Fastener, Turn	74-33854-01	3	8
Filler, Tape Drive (See Note)	74-36425-01	1	24
Filter Assembly, AC Input	70-23769-01	1	Not Shown
Frame, Switch	74-35417-01	1	5
Guide, Rack Mount Installation	EK-BA200-IN	1	Not Shown
Hardware, Rack Mount	70-24263-02	1	Not Shown
Harness Assembly, Left Power	17-01989-01	1	33
Harness Assembly, Power Supply	70-23366-01	1	Not Shown
Harness Assembly, Right Power	17-01990-01	1	32
Insulator, Shield (Replaces 74-37167-01)	74-37167-02	2	9
Key, Plastic	12-17119-01	1	Not Shown
KIT, ACCESSORY	70-25760-01	1	Not Shown
KIT, ACCESSORY	70-25760-04	1	Not Shown
KIT, ACCESSORY	70-25760-02	1	Not Shown
KIT, ACCESSORY	70-25760-03	1	Not Shown
Kit, Bulkhead Panel	74-24505-01	1	Not Shown
Kit, Bulkhead Panel	74-24505-02	1	Not Shown
Kit, Q-Bus Grant CONTINUITY	M9047-SA	1	Not Shown
KIT, RACK MOUNT KIT BA213 LARGE S-BOX	BA213-RA	1	Not Shown
Label, "BA2XX Rev"	36-29164-07	1	Not Shown
Label, "BA2XX Rev"	36-29163-07	1	Not Shown
Label, "BA2XX Rev"	36-29164-07	1	Not Shown
Label, "Baud Select"	36-26584-01	2	Not Shown
Label, "Caution S-Box Shipping"	36-27924-01	1	Not Shown
Label, "Control Panel"	36-29341-01	1	3
Label, "Debet Ethernet Address" (deleted)	36-25542-02	2	Not Shown
Label, "Direct Thermal" (deleted)	36-28231-08	2	Not Shown
Label, "Logo/Model DECsystem 5400"	36-27354-33	1	Not Shown
Label, "Module Number, M7622-AA"	36-26883-43	1	Not Shown
Label, "Module Number, M7635-AA"	36-26883-91	1	Not Shown
Label, "Module Number, M7636-AA"	36-26883-92	1	Not Shown
Label, "Module Number, M9060-YA"	36-26883-17	1	Not Shown
Label, "Module Numbers"	36-26883-18	1	Not Shown
Label, "Pedestal, UK, 100V"	36-27838-04	1	Not Shown
Label, "Pedestal, UK, 220V"	36-27838-03	1	Not Shown
Label, "Pedestal, USA, 100V"	36-27838-01	1	Not Shown
Label, "Pedestal, USA, 220V"	36-27838-02	1	Not Shown
Label, "Postcard FTZ"	36-30422-04	1	Not Shown
Label, "S-Box, Module Utilization"	36-27923-02	1	Not Shown

INDEX BY DEC PART DESCRIPTION
210QS PEDASTAL SYSTEM

DESCRIPTION	DEC PART NO.	FIG. NO.	ITEM NO.
Label, "S-Box, Module Utilization"	36-27923-01	1	Not Shown
Label, "S-Box, Module Utilization"	36-27923-01	1	Not Shown
Label, "S-Box, Module Utilization"	36-27923-02	1	Not Shown
Label, "Serial/Model Made in UK, 100V"	36-27329-02	1	Not Shown
Label, "Serial/Model Made in UK, 220V"	36-27329-04	1	Not Shown
Label, "Serial/Model Made in USA, 220V"	36-27329-03	1	Not Shown
Label, "Serial/Model, Made in USA, 100V"	36-27329-01	1	Not Shown
Label, "Telecom Approval" (Japan) (added)	36-33180-10	1	Not Shown
Label, "Warning Equipment Rating 100-120V"	36-17905-16	1	Not Shown
Label, "Warning Equipment Rating 220-220V"	36-17905-17	1	Not Shown
Latch Assembly, 15 Pin, Slide w/o Hardware	12-18489-03	2	3
Latch Assembly, 2 Piece Slide w/Hardware (added)	12-18489-04	2	6
Latch, Pull	74-34064-01	5	8
Latch, Slide	74-34065-01	5	9
Lens Encoder Set	12-28766-19	1	30
Logo	74-34426-01	5	17
MODULE ASSEMBLY, H3602 BULKHEAD	70-25775-02	1	2
MODULE ASSEMBLY, H3602 BULKHEAD	70-25775-02	2	N/A
Module, 16 MB RAM Memory	M7622-AA	1	19
Module, KN210 CPU	M7635-AA	1	3
Module, KN210 I/O	M7636-AA	1	4
Module, Load	M9060-YA	1	21
Module, SLU Console (Replaces 54-17381-01)	54-17381-03	2	2
Nameplate DECsystem 5400	74-34425-40	1	18
Nut, Hex No. 1/2-28	90-10563-01	2	14
OCP Assembly	70-25752-01	1	27
PANEL ASSEMBLY, FRONT	70-24041-01	5	N/A
PANEL ASSEMBLY, FRONT	70-24041-01	1	17
Panel Assembly, Front (DSSI)	70-25750-01	1	22
Panel Assembly, Gap Filler	70-24071-01	1	9
Panel, Blank Dual	74-33507-01	1	Not Shown
Panel, Front	74-33648-01	5	1
Panel, Left Side	74-33694-01	4	5
Panel, Rear	74-33651-01	4	4
Panel, Right Side	74-33647-01	4	9
Pin, Roll	90-0385-00	3	4
Plate Assembly, Connector	70-26206-01	1	28
Plug, Button	90-07064-00	1	6
Power Supply Assembly (100/120V)	H7868-A	1	Not Shown
Power Supply Assembly (220/240V)	H7868-B	1	Not Shown
Ring, Retainer	90-09257-05	5	10

22